

6308/98

THE FOLLOWING EDUCATIONS HAVE BEEN MADE FROM THIS QUARTER

SURVEY RECORD	DIAGRAM NO.	SECTION	AREA NO. & AL.	TRANSFER NO.	INITIALS	REMARKS
E2670/98	6308/98	Part 1				
	1931/98	Part 2				
	1982/98	Part 3				720/1807

S. G. NO.

1930/2004

Approved

[Signature]
for Surveyor General

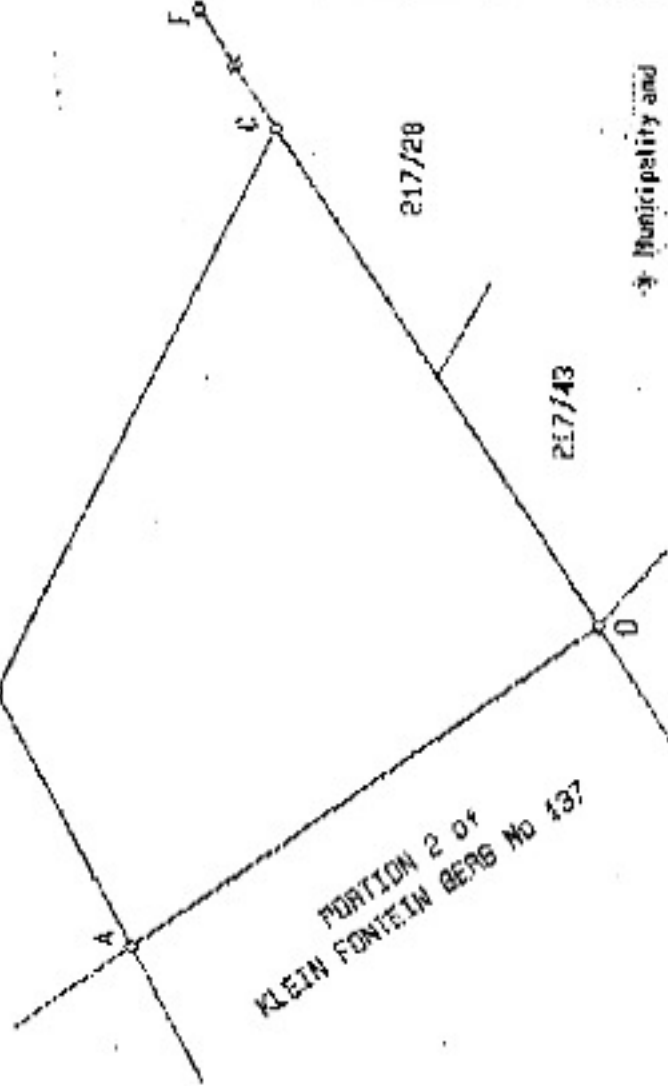
2004.10.11

Sides Metres	Angles of Direction	CO-ORDINATES Y System 4629' X	
		Y	X
AG 412,30	274 05 46	+0,00	+3 700 000,00
BC 887,93	328 25 00	+69 339,12	+54 745,57
CD 946,17	89 09 59	+82 947,87	+54 773,00
DA 607,40	177 25 02	+82 477,86	+55 537,85
Connections:	3322/129	+83 322,74	+55 550,15
	3322/130	+83 158,11	+55 588,68
CF 4 745,14	269 08 59	+87 456,60	+55 884,63
		+57 739,62	+55 488,81

Beacon Descriptions:

- B - 16mm iron peg below ground in gravel road
- A, C, F - 16mm iron peg in stone cairn
- D - planted stone

REMAINDER



Municipality and

SCALE 1:10000

The figure

A B C D

represents

40.1389 Hectares

of land, being

PORTION 2 of the farm GEELOUHOOMSBERG No 342

situate in the Administrative District George
Province Western Cape

Surveyed in February 2004 by us

March

J. CHRISTIANNS P. S0894 & J. H. RENS PLE0517
Professional Land Surveyors

This diagram is annexed to

The original diagram is

No. 6302/1988

enjoined to

Plan No. Geor. 342

S. G. No. B 851/2004

Coop. BL-704 (6133)

LET 06270300

No.

dated

i. f. o.

Registrar of Deeds

THIS PORTION IS SUBJECT TO
CONDITIONS REFERRED TO IN
SECT. 11 (b) OF ACT 21/1940.

EXEMPT FROM PROVISIONS OF ACT
70 OF 1972
SECTION 2 (a)

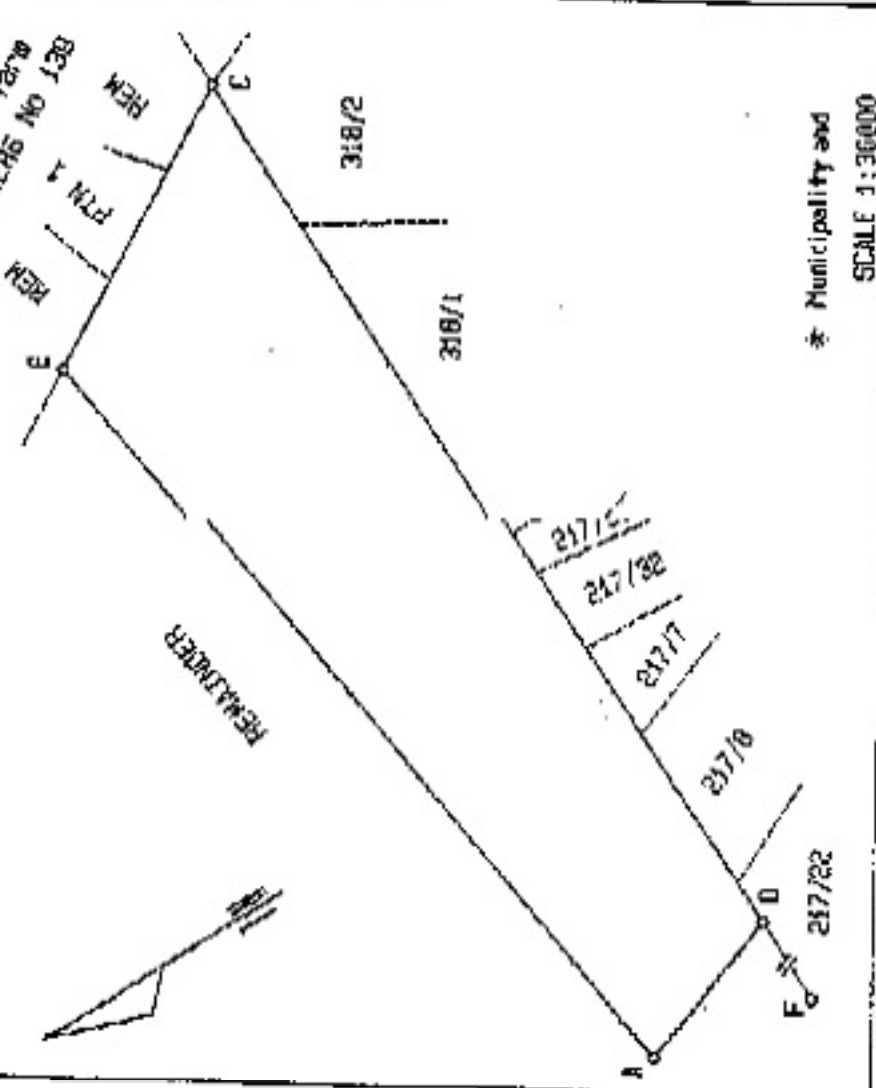
EXEMPT FROM PROVISIONS
OF CHAPTER II
OF ORD. 15/1973

JABU CHRISTIANS, REGISTERED LAND SURVEYOR, FIDUCIARY

Sides Metres		Angles of Direction		COORDINATES Y as per M23, X		S. G. NO. 1352/2004
AB	3 974,26	262 08 07	Constants	+00	+3 700 000,00	Approved <i>Jabou Christians</i> for Surveyor-General 2007-10-11
BC	1 377,18	328 31 26	A	+52 36 40	+54 525,31	
CD	4 385,05	89 09 59	H	+58 43 60	+54 281,90	
DA	749,45	160 41 30	C	+57 71 02	+55 488,01	
Connections:		332/128	D	+52 11 56	+55 532,91	
		332/130	A	+53 15 11	+55 588,68	
DF	1 795,26	89 09 59	F	+57 45 60	+55 864,63	

Beacon Descriptions:

A, B, C, D - 16mm iron peg in stone cairn
 F - planted stone



The figure represents 408,2893 actares of land, being

PORTION 3 of the farm GELHOUTBOOMBERG NO 342

situate in the Administrative District Geyse Province Western Cape

Surveyed in February 2004 by us *Jabou Christians* J. CHRISTIANS PLS0094 & J. H. REBE PLS0017 Professional Land Surveyors

This diagram is annexed to the original deed is No. 6103/1998 annexed to L.F.O.

File No. Geor. 342
 S.G. No. B 852/2004
 Comp. BL-704 (6143)
 BL-708 (6134)
 LPI 00270000

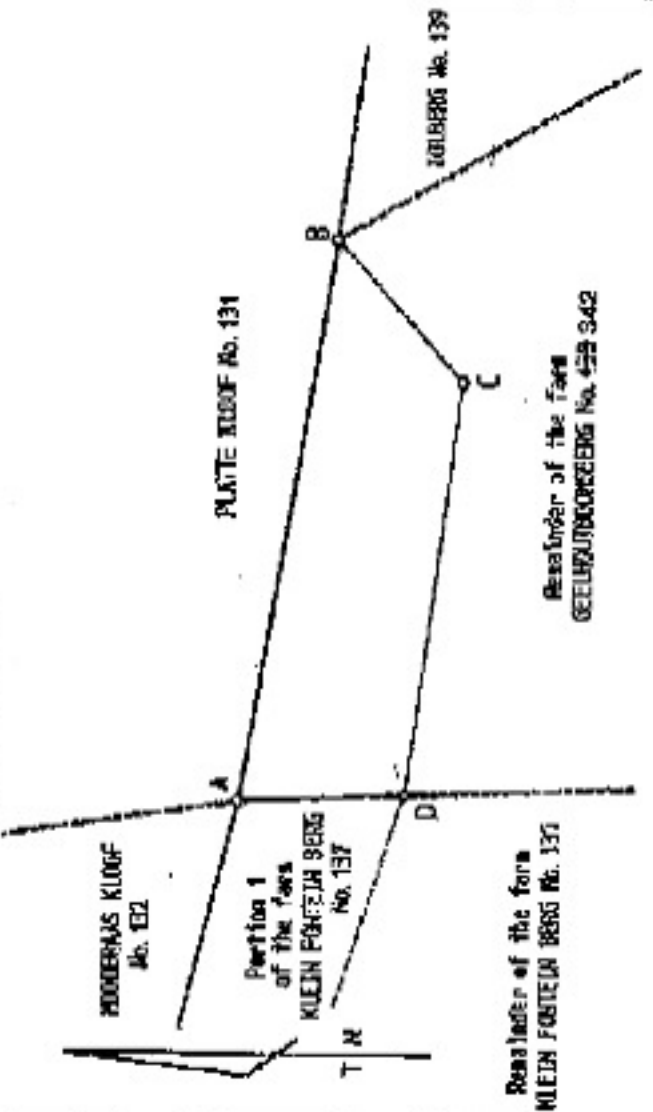
Register of Deeds

EXEMPT FROM PROVISIONS OF ACT 20 OF 1970
 SECTION 21

EXEMPT FROM PROVISIONS OF ACT 20 OF 1970
 SECTION 21

SIDES Metres	ANGLES OF DIRECTION	CO-ORDINATES		S. G. No.
		Y	X	
	Constants:	+ 63 445, 45	+ 3700 000, 00	6304/1988
AB 4011, 36	279 22 12	A + 63 445, 45	+ 51 456, 05	Approved
BC 1340, 92	47 42 51	B + 59 487, 65	+ 52 109, 14	<i>f. d. van</i>
CD 2936, 41	97 17 30	C + 60 479, 51	+ 53 011, 21	for
DA 1183, 67	177 25 06	D + 63 392, 18	+ 52 638, 52	SURVEYOR-
GEELHOUTBOEGH GED 16	28 128	+ 62 812, 11	+ 51 854, 44	GENERAL
		+ 59 235, 14	+ 55 282, 66	1998-11-09

Description of Beacons
 A, B : Cairn of stones
 C : 20mm iron peg
 D : Hole in rock



Scale 1:50000

The figure represents 382,1150 hectares of land being Partition 1 of the farm of the farm

Administrative District: George
 Province of Western Cape
 Surveyed in August, September 1998 by me

P R Barnard PLS-0025
 Professional Land Surveyor

[Signature]

This diagram is annexed to No. d.d. l.f.d. Registrar of Deeds	The original diagram is	File Geogr. 342
	S.E. No. 6203/1998 Transfer Grant	S.R. E 2694/1998 G.P. Comp. 81-70A (6133)

EXEMPT FROM PROVISIONS OF ACT 20 OF 1970 SECTION 2 (b)

EXEMPT FROM PROVISIONS OF CHAPTER III OF ORD. 15/1974